

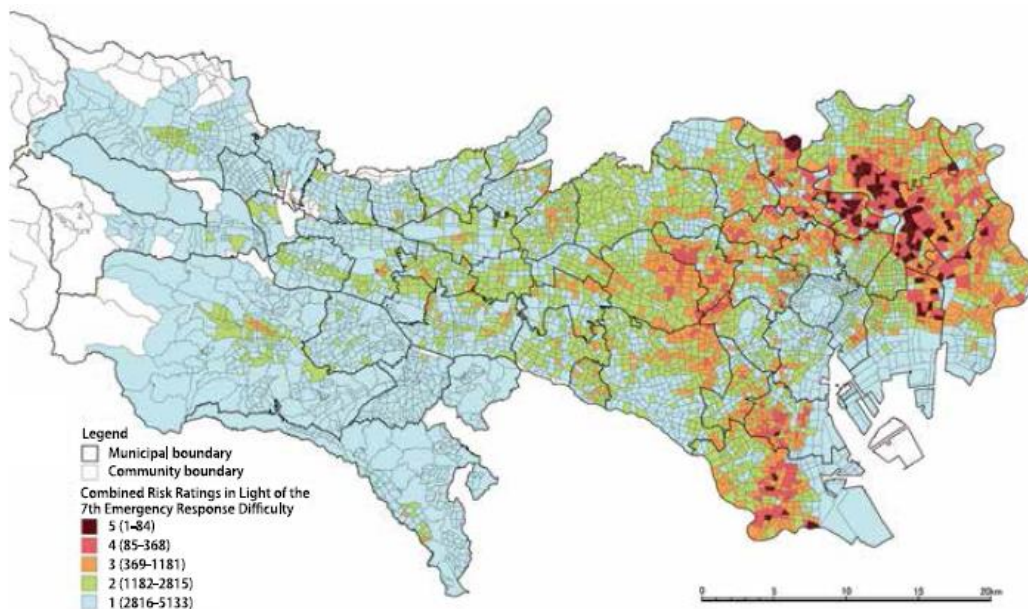
## Community Earthquake Risk Assessment Study

In accordance with Article 12 of the Tokyo Metropolitan Earthquake Preparedness Ordinance, community risk levels are scientifically assessed and made public about once every five years with the following objectives:

- (1) To be used as an indicator for city planning with an eye to earthquake resistance
- (2) To help select districts to implement measures aimed at reducing the impact of earthquakes
- (3) To deepen the understanding of Tokyo residents with respect to earthquakes and heighten awareness of disaster prevention

In the survey results announced in 2013 by the TMG, 5,113 communities in urbanized districts were examined. Each community's risk of building collapse and risk of fire resulting from earthquakes were assessed. Using the "combined risk," which combines the two risk assessments, the survey rates communities on a scale of five (high risk) to one (low risk), according to the each community's vulnerability to hazards.

In addition, the TMG also assesses each community's degree of "emergency response difficulty," or how easy (or difficult) it is to conduct rescue activities in stricken areas and evacuate from them, and applies this assessment to create other types of ratings.



Community Earthquake Risk Assessment (Combined Risk Ratings in Light of Emergency Response Difficulty)