

Tama New Town

a fascinating area in an expanse of hills

*Let's visit
Tama New Town!*



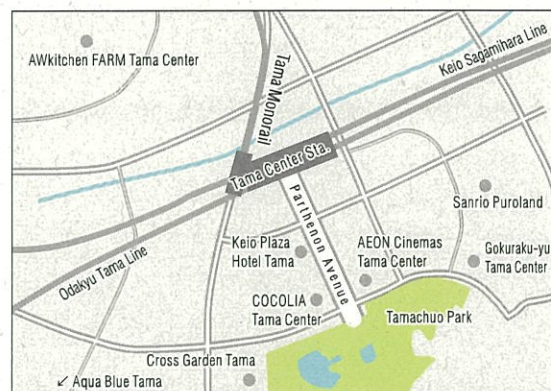


Pack your bags for a fun-filled holiday in Tama New Town!

Tama New Town is just about a 30-minute train ride from the heart of Tokyo. It covers an expansive area straddling the four municipalities of Tokyo (Hachioji, Machida, Tama, and Inagi Cities). The beautiful urbanized town in the expanse of Tama Hills has many tourist attractions such as large-scale theme parks and outlet shopping mall.

Tama Center Area

Various seasonal events are held in the promenade of Parthenon Avenue that stretches from Tama-Center Station to Parthenon Tama to entertain visitors all year round. Along the Avenue are a number of shopping facilities (rich in variety), a world-famous theme park, and a beautifully-designed park down the way.





Parthenon Avenue

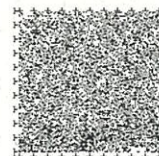
Parthenon Avenue stretches from Tama-Center Station (Keio Sagami-hara Line and Odakyu Tama Line) to Parthenon Tama (Tama City Combined Cultural Center). The camphor trees create soothing shade from the hot summer sun, and the seasonal flowers in planters add colors to the avenue. You will also enjoy the variety of events held throughout the year at large-scale commercial facilities, hotels, restaurants, and a multiplex movie theater on Parthenon Avenue. The annual Illumination event (from November to January of the following year) is especially spectacular and a must-see; about 400,000 lights line the avenue 400 m from north to south, and 200 m from east to west. Ochiai, Tama City

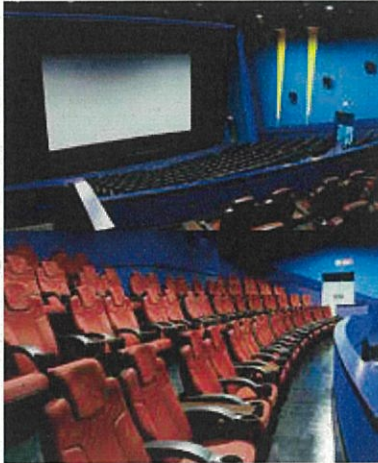


Sanrio Puroland

“Sanrio Puroland” marks its 30th anniversary in December 2020. This indoor theme park where you get to meet cute characters of Sanrio is loved not only by children but people of all ages. Sanrio Puroland offers more than enough activities and facilities to enjoy the fantasy world of Sanrio characters, such as live shows, character greetings, a number of attractions, and lovely monuments including the Wisdom Tree. It also attracts repeat visitors with its seasonal events (Spring Puro Easter, summer events and festival, and Halloween in autumn, etc.) and a birthday celebration for each month’s birthday-celebrant characters.

1-31 Ochiai, Tama City
<https://www.puroland.jp/>
(English, Chinese, Korean, and Thai)





AEON Cinemas Tama Center

AEON Cinemas Tama Center has a total of 8 screens and a seating capacity of 1,704. Enjoy a rich lineup of foreign and Japanese films. In the lobby, you will be greeted by a large board depicting scenes from a variety of Studio Ghibli films.

1-45-2 Ochiai, Tama City
<https://www.aeoncinema.com/cinema/tama/>
 Self-Service Ticketing Kiosk: English available



Tamachuo Park

Tamachuo Park is characterized by a large pond and a grassy square. It attracts many visitors, such as families with children and people out for a stroll, with its beautiful scenery of seasonal flowers blooming all year round in the broad field.

2-35 Ochiai, Tama City



COCOLIA Tama Center

COCOLIA Tama Center houses over about 120 specialty stores including establishments that are popular among customers from abroad.

1-46-1 Ochiai, Tama City
<https://www.cocolia-tamacenter.com/>
 Brochures (English, Chinese, and Korean)



Keio Plaza Hotel Tama

Keio Plaza Hotel Tama is the official hotel of Sanrio Puroland. Their 8 rooms decorated with Sanrio character are what makes the hotel strong popularity.

1-43 Ochiai, Tama City
<https://www.keioplaza.co.jp/tama/> (English, Chinese, and Korean)
 Restaurant Menus and Facility Guide: English available.



Cross Garden Tama

Cross Garden Tama serves the daily shopping needs of the residents. Visiting here will give you an inside look at the daily lives of the locals.

2-33 Ochiai, Tama City
<http://xgarden-tama.net/>



Gokuraku-yu Tama Center

Gokuraku-yu Tama Center boasts a vast range of baths from natural spas to open-air spas (carbonated spring). The traditional Japanese atmosphere in both the exterior and interior of the facilities is one of their popular features.

1-30-1 Ochiai, Tama City
<https://www.gokurakuyu.ne.jp/tempo/tamacenter/>
 *Brochures also available in foreign languages



Aqua Blue Tama

The Tama Municipal Heated Pool, "Aqua Blue Tama," features a vast range of extensive facilities such as a lazy river pool, a 50-metre pool, kids' pools, and restaurants.

*Pools are closed from Oct. 1, 2020 to Mar. 31, 2021.
 Also closed on Tuesdays.
 3-15-2 Minamino, Tama City
<http://www.tama-pool.org/>



AWKitchen FARM Tama Center

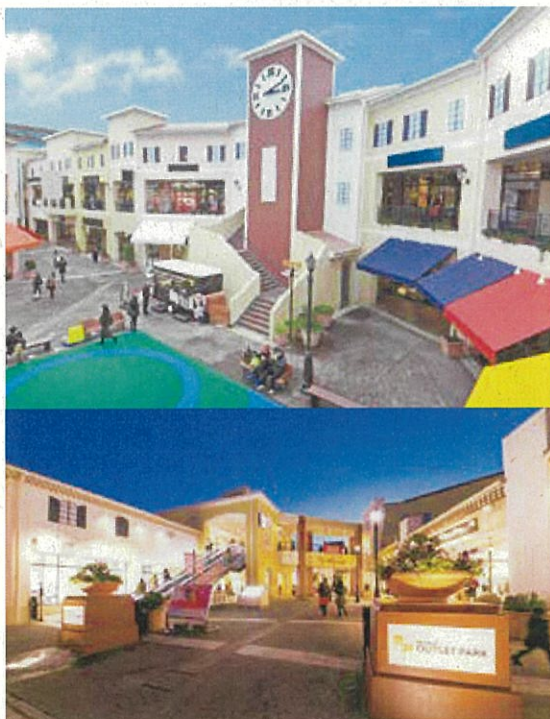
The Italian restaurant AWKitchen FARM is like a secret hideaway nestled in rich greenery. The restaurant takes pride in its dishes made with vegetables from carefully-selected producers and producing areas.

2-2-2 Sannoshita, Tama City
<http://www.eat-walk.com/en/awfarm/> (English)
 *Menu has English information.



Minamiosawa and Keio Horinouchi Area

The outlet mall is a short walk from Minami-osawa Station and houses a total of about 120 popular brand stores. The beautiful landscape around the station has been selected as one of the Hachioji 100 Best Sceneries view spots.



Mitsui Outlet Park Tama Minami Osawa

Mitsui Outlet Park Tama Minami Osawa boasts its easily-accessed location, which is only a 2-minute walk from Minami-osawa Station.

Inside the stylish outlet mall with exterior walls evocative of Provence in southern France are about 120 stores of imported luxury brands, popular multi-brands, sports brands, etc. Also, there is an abundant line-up of general stores with gardening supplies, tools, and other daily necessities.

A weekend at Mitsui Outlet Park Tama Minami Osawa offers visitors many more delights than just shopping; one can enjoy live music, events, and a train-shaped vehicle, the "mini-express," running inside the mall. Come visit for a relaxed family holiday.

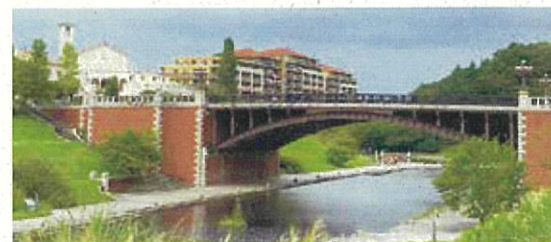
1-600 Minamiosawa, Hachioji City
<https://mitsui-shopping-park.com/mop/tama/>



Around Minami-osawa Station

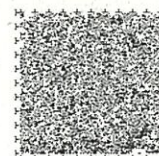
The station area boasts a beautiful landscape, designed after a European mountain region, and a great infrastructure of pedestrian-only paths.

Minamiosawa, Hachioji City



Nagaike Park

The park offers the beautiful landscape of Satoyama (an undeveloped woodland area near a village) and two reservoirs among other features.
 2-58 Bessho, Hachioji City





Let's have fun in Tama New Town !



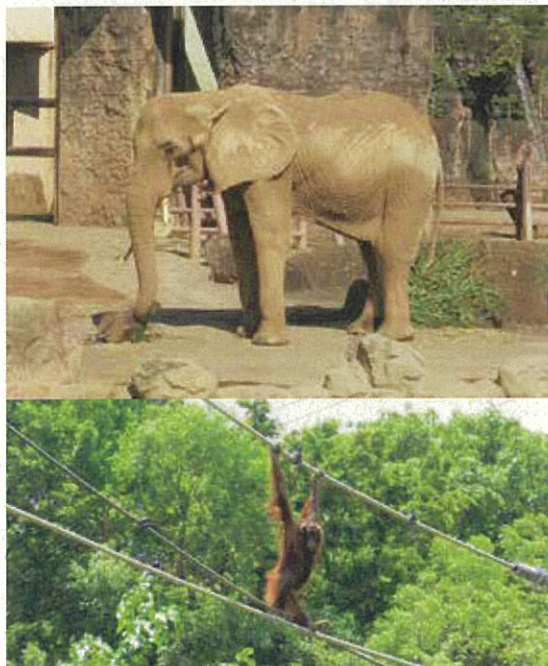
Tokyo Asobimare

Tokyo Asobimare is an indoor amusement park where you can have a whole day of family fun. Food and beverages from outside are allowed. There is no time frame or restrictions on re-entry. The park is a fun line-up of attractions such as the "mini-express" (mini-railway) that runs for about 120 meters, air-filled playground equipment, and go-karts (a big hit!). Do not miss Snowtown, the biggest attraction of Tokyo Asobimare, where it snows 365 days a year; you can go sledding and play in the snow any time of the year.

2-1-2 Bessho, Hachioji City
<https://asobimare.jp/tokyo/>

Suburban areas of Tama New Town

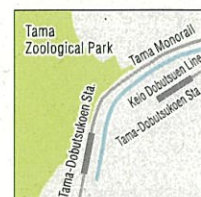
The suburban areas of Tama New Town are quite rich in Nature, with many popular spots worthy of a visit. Here, we will tell you about their shopping spots, temples with rich Japanese histories, and facilities that will fascinate visitors with new charms on every visit.



Tama Zoological Park

Tama Zoological Park makes the best use of their inventiveness and the topography of the verdant Tama Hills to show its animals in a freer environment as close to their natural habitats as possible. As many as over 300 animal species live in the vast land of about 52 hectares, which is divided into four areas: the Asian Zone, the Australian Zone, the African Zone, and the Insectarium. You can observe Japanese wild raccoon dogs, snow monkeys, Asian black bears, and red-crowned cranes as well as orangutans traversing the Skywalk. The zoo takes a highly innovative approach to provide fun for visitors of all ages.

7-1-1 Hodokubo, Hino City
<https://www.tokyo-zoo.net/zoo/tama/>
(English, Chinese, and Korean)
English available in the guide map, guide signs, brochures, and animal-species labels.

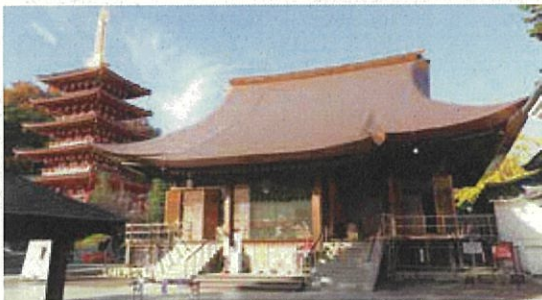
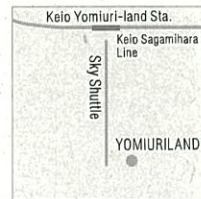




YOMIURILAND

YOMIURILAND offers shows and over 40 attractions for both kids and adults to enjoy, including a bungee jump, roller coasters, a Ferris wheel, and hero shows. You will also take pleasure in seasonal events all year round such as cherry-blossoms viewing in spring, pools in summer, and illuminations in autumn and winter. In 2016, the indoor amusement park area "Goodjoba" was opened to offer visitors an opportunity to explore craftsmanship in four industries such as automobiles and stationery. With some attractions renewed in spring 2020, and a new factory to be opened in spring 2021, YOMIURILAND is gearing up for more growth!

4015-1 Yanokuchi, Inagi City
<https://www.yomiuriland.com/>
 (English, Chinese, Korean, and Thai)

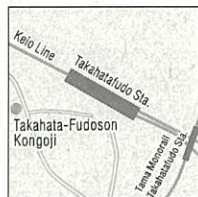


Takahata-Fudosen Kongoji

The history of Takahata-Fudosen Kongoji goes back over 1,000 years. The temple still possesses the Statues of Takahata Fudo-son (designated as an important cultural property) today, along with other cultural treasures such as the Fudo-do hall and the Nio-mon Gate (Gate of Deva).

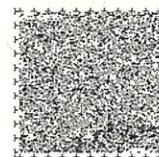
Also, you will enjoy the beauty of the four seasons in Japan through the profusion of hydrangea flowers and Japanese maple trees in the grounds of the temple.

733 Takahata, Hino City
<https://www.takahatafudosen.or.jp/>
 (English)



Around Seiseki-sakuragaoka Station

This shopping area, with its rows of department stores and retail stores, is richly endowed with Nature, with the Tamagawa river flowing nearby. It is also well-known as the location used in the movie, "Mimi-wo-sumaseba" (Whisper of the Heart).
 Sekido, Tama City





Popular Cycling Course in Tama New Town


Tama New Town boasts a cycling course popular among local cyclists, the “Minami-Tama One Kansen Road” (commonly known as “Onekan”). The wide shoulders, moderate traffic volume, and gently undulating roads allow you to enjoy the beautiful landscape while riding a bicycle. There are also stores frequented by cyclists in areas along the Onekan Road.




Minami-Tama One Kansen Road—best suited for cycling training!

This cycling route from Tamagawara-bashi bridge in Chofu city, Tokyo to Machida-kaido Ave, in Oyama-machi, Machida City, Tokyo is about 17 km. Although the course consists of normal road, many enthusiasts visit to go cycling, saying that the relatively wide shoulders and gradual ups and downs of the route are ideal for training.


Road Map of Minami-Tama One Kansen Road



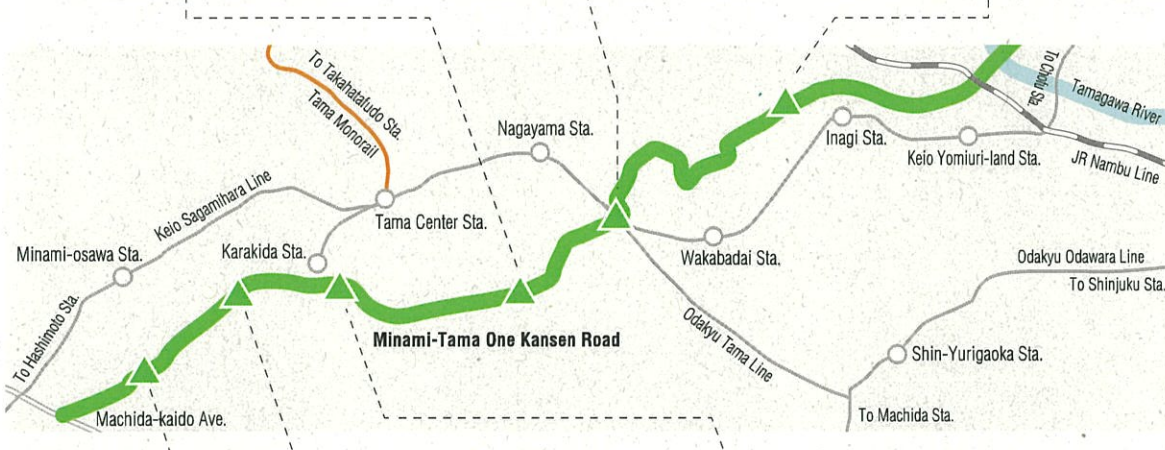
Around Tama Kyushoku (school meals) Center (front side)
The long, gentle slope leads to an intersection with the Kamakura Kaido Road.




Around Tama Higashi Park
Cycling in the direction of Inagi City, you will come to the long downhill slope.




Around Inagi Chuo Park
The Kujira bashi (whale bridge) over the Inagi Chuo Park is the landmark of the park!




The map shows the route of Minami-Tama One Kansen Road (green line) connecting Machida-kaido Ave to Tamagawara-bashi bridge. Key stations include Minami-osawa Sta., Karakida Sta., Tama Center Sta., Nagayama Sta., Wakabadai Sta., Inagi Sta., Keio Yomiuri-land Sta., and Shin-Yurigaoka Sta. It also shows the Keio Sagamihara Line, Tama Monoreil, Odakyu Tama Line, and Odakyu Odawara Line.



Around Oyama Nagaike Tunnel
Driving toward Machida City, you will find the starting and ending points of the Minami-Tama-One Kansen Road.



Around Green Walk Tama (front side)
There are many large-scale commercial facilities straddling the boundary between Tama City and Hachioji City.



Around Karakida Ohashi Bridge
Enjoy the vast landscape views from the land bridge.



Popular Spots Among Cyclists

In the vicinity of the popular cycling course are a professional sports bike shop that offers a wide range of services from advice, checkup, maintenance, and much more, cafés to feel refreshed before and after your ride, fantastic viewing spots, etc.



BIKE PLUS

With the motto of “assured safety,” BIKE PLUS strives to eliminate any anxiety customers may have before and after a purchase. They earn the trust of the local cyclists with their advanced repair and maintenance services for all bicycle brands while specializing in sales of the world-famous American brand “TREK.” There are also other recommended services that cannot be missed out on such as the free bicycle check-up, a service available at any time and for unlimited number of times, and “virtual cycling,” where you get to try out their newest bicycles.

2-9-15 Tsurumaki, Tama City
<https://www.bike-plus.com>
 Website Contact form: English available



CROSS COFFEE

CROSS COFFEE, a cyclist-friendly café, is popular as the starting place or destination of the Onekan Cycling Course. They serve coffee with Horiguchi coffee beans, a delicious drink with rich chocolate, protein drinks, baguette sandwiches, and more. Many cyclists also love their weekly Saturday events (the “Saturday ride,” etc.) and the favorable location of the bicycle racks (clearly seen from the inside of the store) as well as free key-lending.

227-1 Yanokuchi, Inagi City
<http://www.cross.coffee/>
 *An English menu is available.



7 Nagayama, Tama City

Sakimori-Mikaeri-no-Toge (Mountain pass where the dispatched guardians are sent off)

Sakimori-Mikaeri-no-Toge Pass is also called the “Panoramic hills of the Tama Hills,” with the view overlooking the vast region of Tama New Town as well as Mt. Fuji and Chichibu Mountains in the far distance. Sakimori-Mikaeri-no-Toge was named after an ancient song, handed down to the present, about seeing off dispatched guardians (soldiers) leaving to defend the Northern Kyushu region.



TOKYO2020

Tama New Town Becomes Part of the Olympic Cycling Road Race Course

Tama New Town Road Race

With the approval of the International Cycling Union (UCI), the Tokyo 2020 Olympic cycling road races (men and women) were decided to be held on a course that passes through Tama New Town. After the start, the athletes will go for an approximately 10-km parade ride to the official starting point of the race, which is near the Koremasa bridge.

The route in Tama New Town makes cyclists travel from Inagi City to Tama City on the Minami-Tama One Kansen Road and through the road in front of Tama-Center Station, to Tama New Town Avenue, and then to Tama City, Hachioji City, and finally, Machida City.



Minami-Tama One Kansen Road (Inagi City)



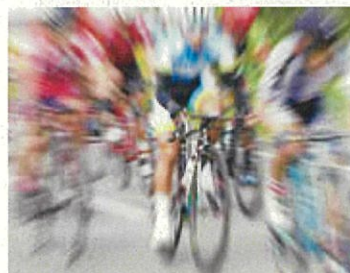
Tama-Newtown-dori Ave. (Hachioji City)



Tama-Newtown-dori Ave. (Machida City)

Tokyo 2020 Olympic Road Race

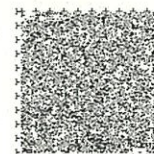
Both male and female athletes start at Musashino no Mori Park in Tokyo and aim for the goal in Fuji International Speedway in Shizuoka prefecture via Kanagawa and Yamanashi prefectures. This course covers a total distance of about 244 km for men and about 147 km for women including the parade-route length. The acquisition altitude (the total given height from start to goal) is about 4,865 m in the men's race and about 2,692 m in the women's race.



Best Features of Road Racing

A majority of the road race courses generally have a straight-line route from start to finish rather than a circular course that runs around a specific area. As you cheer on the athletes in the live broadcast of the race, you will also enjoy the continuously-changing beautiful scenery, which will surely make you feel as if you were traveling all over the region.

Another main attraction of this racing event is that, since it is held on a public road, anyone can try out the same route for themselves on non-racing days and develop an understanding of the professional standards.



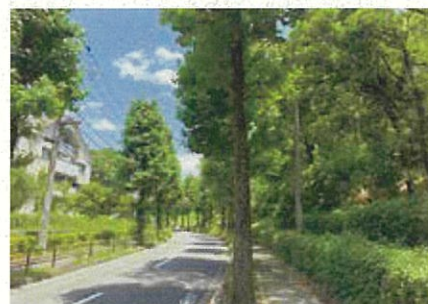


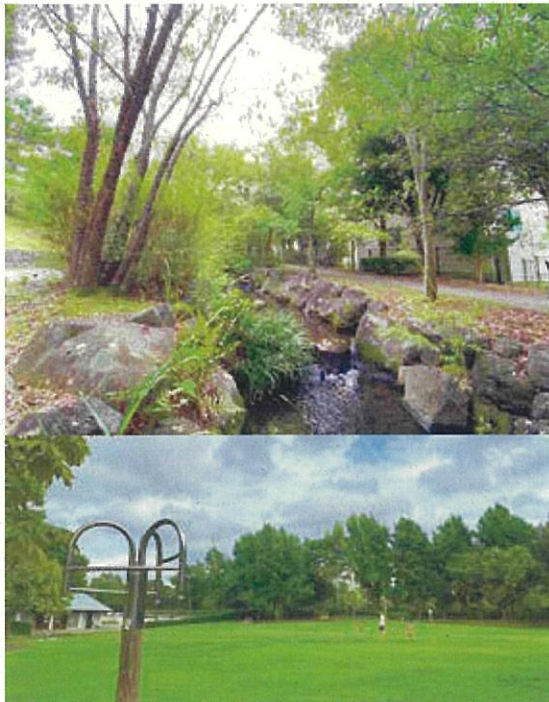
The Best Features of Tama New Town —a fascinating area in an expanse of hills

It goes well back to the era of rapid economic growth after World War II when Tama New Town was planned and developed in the southwest area of Tokyo to provide an ideal living environment. The vast area straddling the four municipalities of Hachioji, Machida, Tama, and Inagi Cities covers a total land area of about 2,853 hectares (about 14 kilometers from east to west and 2 to 3 kilometers from north to south).

Strategically-Planned Urbanized Area

Tama New Town places a special emphasis on offering a beautiful landscape by maintaining a long straight road that leads to Mt. Fuji and parks with observation spots. In the region that revolves around the parks and pedestrian-only paths, you will see rows of sophisticated townhouses adding calm and elegance to the whole landscape in the region, which is praised for having a park-like atmosphere.

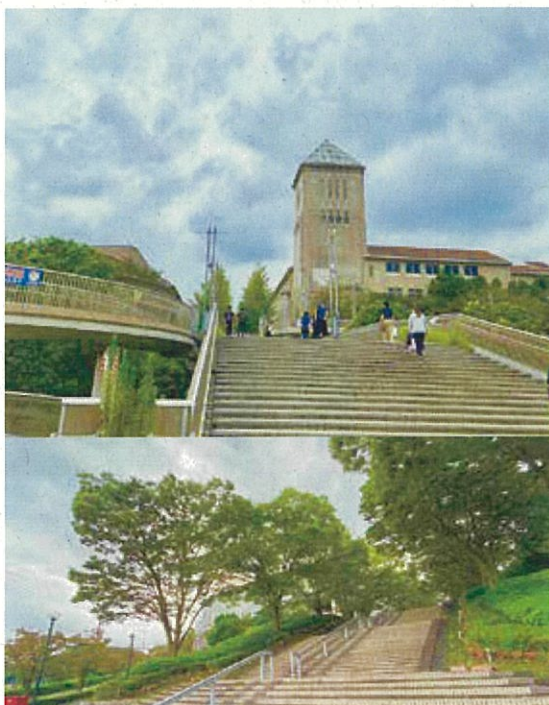




Beautiful Area with Rich Greenery

As much as over 30 percent of the land area of Tama New Town is open space with rich greenery (parks, green spaces, etc.). You will enjoy the change in seasons while walking in the well-maintained promenade.

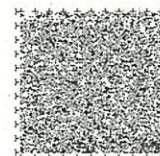
There are many attractive parks in the region, but here we will feature Tsurumaki Nishikoen Park near Karakida Station. The park offers a variety of attractions such as combined playground equipment, fitness equipment, the grass square, weeping cherry trees (designated as the Natural Monument of the City), and a paddy field area that will remind visitors of the landscape before the Tama New Town development project. Nagaike Park located in Bessho, Hachioji City also pleases the eyes of visitors throughout the four seasons with views of Satoyama (semi-natural areas) represented by two reservoirs, Nagaike and Tsukuike, a vast mixed forest, and paddy fields.



Town with Rich Environments for Learning and Cultural Development

Events are held all year round at different locations of Tama New Town to enliven the area. Parthenon Avenue, which stretches from Tama-Center Station to Parthenon Tama, offers a Halloween special event and illuminations (from Christmas season in November to January of the following year). Also, during the flower event “Hanakazari (garland),” you will see many flowers adding color to the avenue. The “Autumn Marche” at Mitsui Outlet Park Minami Osawa is always crowded with people visiting for products that are only available there.

Also, this vast greenery environment is also home to a number of colleges, universities, and vocational schools. Young people are bringing more energy to the region.





Reviving the Town (Examples of Practical Actions)

It has been almost 50 years since the first group of residents moved into Tama New Town. Continued efforts are made to rebuild and renovate the aging public housing complexes (both for rent and sale) and to improve the public facilities toward the realization of a region that provides better comfort for people of all age groups to live and continue living for years to come.



Brillia Tama New Town

Suwa 2-Chome residence, the housing complex in the Suwa and Nagayama regions, was the first to be occupied in Tama New Town. In 2010, forty years after its founding, a project for the comprehensive demolition and reconstruction of the complex was approved after assiduous discussions with the owners.

The owner-centered project was successful with the support of the government—in 2013, the old housing complex was reborn as “Brillia Tama New Town,” with a total of 1,249 apartments in 7 buildings.

They forged on under the slogan of “developing the community to ensure citizen safety and peace of mind for years to come,” placing great emphasis on conserving the surrounding greenery and the community. Brillia Tama New Town is strategically designed down to the details, with a range of facilities to provide a comfortable and safe environment for all residents, including the elderly and children, to live in for many years to come. On the premises are a multiple room, a party room, a community space, a vegetable garden, and other facilities to foster community among residents, as well as a nursery, a support facility for the elderly, and barrier-free facilities for wheelchair/stroller users.

4- 2, 2 Suwa, Tama City



Vivace Suwa Jidokan (Children's Center)

Vivace Suwa Jidokan was re-opened at the completion of rebuilding an adjoining Suwa 2-Chome residence. Vivace, which means “lively” is a musical term that carries the wish that the place be good for all children to play and enjoy to the fullest. Vivace is located in a lush green environment adjacent to Suwa-Daini Koen Park and has a play room characterized by a round roof and high ceilings.

2-8 Suwa, Tama City



Belle-Colline Minami Osawa (UR rental housing)

Belle-Colline Minami Osawa boasts an elegant landscape that evokes the streets of Europe, with structures such as chic brick buildings and a public square with monuments. Since it has been 30 years after it was built, new management approaches are being taken to revitalize it.

UR and Muji (a Japanese company specializing in well-designed minimalist fashion and living) have been collaborating in the renovation of some residences, named "MUJI*UR" under the concept "Keep the flavor of the original (do not overdo it)." In the living areas, they offer a new lifestyle with white as the base color and the use of newly-developed hemp-tatami mats and kitchens.

The meeting place has also been renovated to further revitalize the community. It is used for a variety of community activities and has a community space in warm wood tones and a large-scale kitchen that can be used for parties and cooking classes.

5-3 Minamiosawa, Hachioji City



Tama New Town Suwa danchi (housing complex) (Tokyo metropolitan housing)

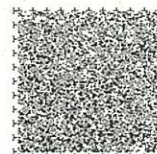
The Suwa danchi is under reconstruction due to the aging and deterioration of the buildings, along with the lack of wheelchair-friendly facilities. Making use of the former site of a junior high school and an elementary school ground, a great effort is being made to create a living environment adapted to the declining birth rate and the aging population; one example is seen in the installation of elevators.

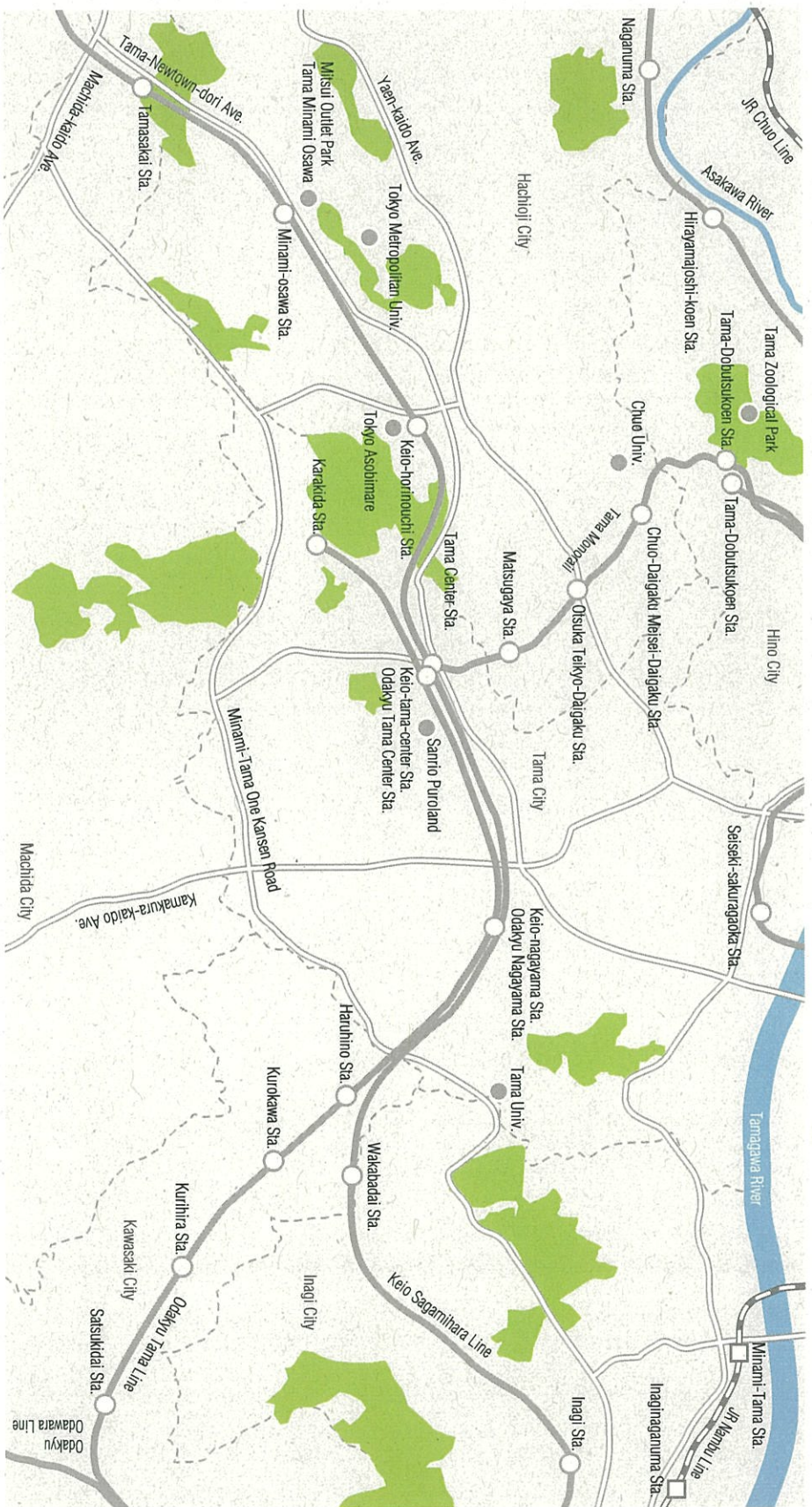
3-12 Nagayama, Tama City/ 5-1 Suwa, Tama City

History of Tama New Town

- 1966 Construction of Tama New Town began.
- 1971 The first occupants started moving into the Suwa and Nagayama regions.
- 1974 Keio Sagami-hara Line extended services to Keio-tama-center Station.
- 1980 Commercial and public facilities in Tama New Town were partially opened.
- 1983 Occupants started moving into the Minami Osawa region.

- 1988 Keio Sagami-hara Line extended services to Minami-osawa Station.
- 1990 Odakyu Tama Line extended services to Karakida Station. Keio Sagami-hara Line began full-line operation.
- 1999 Occupants started moving into the Wakabadai region.
- 2000 Tama Toshi Monorail Line extended services to Tama Center Station.





Tama New Town—a fascinating area in an expanse of hills

Published in October 2020 Registration No. (31)95

Tama New Town Project Office, Urban Redevelopment Section, Bureau

Edited and produced by C&Z Communication Co., Ltd
 Printed by C&Z Communication Co., Ltd

of Urban Development Tokyo Metropolitan Government
 8-1, Nishi Shinjuku 2-chome, Shinjuku-ku, Tokyo, 163-8001
 TEL (direct): 03-5320-5472

*Unless otherwise noted, the contents published in this magazine are as of October 2020. Details may change after publication. Please check websites or other sources for up-to-date information before your visit. Also, please be aware that we will take no responsibility for any liability for any damage arising from the use of information in this magazine.